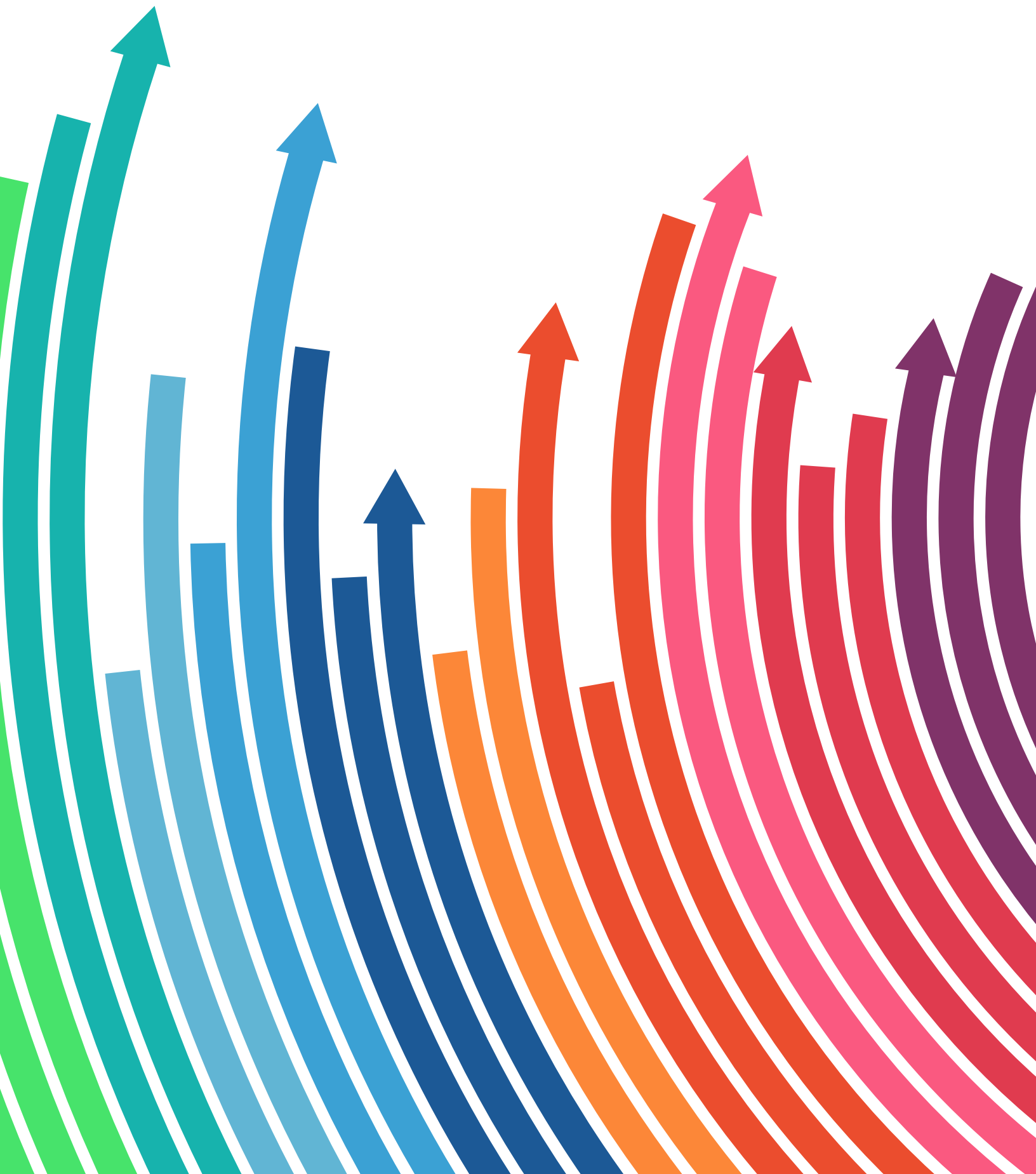


# Pathways For All

**NACCE**  
THE IMPACT OF ENTREPRENEURSHIP

NATIONAL ASSOCIATION  
FOR COMMUNITY COLLEGE  
**ENTREPRENEURSHIP**





*"The NACCE network connects some of the most entrepreneurial leaders in the country and creates a place where we can grow, change, and innovate. This has never been more important than it is today."*

**STEVEN SCHULZ, Ph.D.**  
**BOARD CHAIR, NACCE**  
**PRESIDENT, NORTH IOWA AREA**  
**COMMUNITY COLLEGE**

## Board of Directors

### Board Chair

**Dr. Steven Schulz**  
President  
North Iowa Area Community  
College - IA

### Chair-elect

**Dr. Chris Whaley**  
President  
Roane State Community  
College - TN

### Treasurer/Secretary

**Dr. Sharon Pierce**  
President  
Minneapolis College - MN

### Dr. Michael Baston

President  
Cuyahoga Community  
College - OH

### Dr. Carlos Turner Cortez

Chancellor  
San Diego Community  
College District - CA

### Dr. Jermaine Ford

President  
Florence-Darlington  
Technical College - SC

### Dr. Brenda Hellyer

Chancellor  
San Jacinto College - TX

### Mr. Jee Hang Lee

President and CEO  
Association of Community  
College Trustees -  
Washington, D.C.

### Dr. Richard MacLennan

Chancellor, Ventura County  
Community College  
District - CA

### Dr. James Murdaugh

President  
Tallahassee Community College - FL

### Ms. Jen Worth

Senior Vice President,  
Workforce and Economic  
Development, American  
Association of Community  
Colleges - Washington, D.C.

### NACCE Emeritus Advisory Committee

**Dr. Gail Carberry**  
(ret.) President  
Quinsigamond Community  
College - MA

### Dr. Kevin Drumm

President  
SUNY Broome Community  
College - NY

### Dr. Angeline Godwin

(ret.) President  
Patrick & Henry  
Community College - VA

### Dr. Jim Jacobs

President Emeritus  
Macomb Community College - MI

### Dr. Edwin Massey

President Emeritus  
Indian River State College - FL

### Dr. Susan May

President Emeritus  
Fox Valley Technical College - WI

### Dr. Ron Thomas

(ret.) President  
Dakota County Technical  
College - MN



NATIONAL ASSOCIATION  
FOR COMMUNITY COLLEGE  
**ENTREPRENEURSHIP**

# → Boundless Opportunities

*What are the faces of entrepreneurship?* They are the faces of community college students – first-generation college students, certificate and degree-seekers, minorities, under-resourced individuals, veterans, and others – who look to local community colleges to help improve their lives.

Helping our colleges and technical schools deliver entrepreneurial programs and curriculum on a national level helps cultivate the next generation of entrepreneurial leaders and expands opportunities for individuals and their communities.

This is no small feat. Thanks to the strong support of entrepreneurial forerunners, educators, and policy leaders across the country, we can impact over 3.3 million students in our growing network of community colleges and together help move the needle of economic prosperity in our member communities.

We pursue this goal in several ways around three distinct areas:

- Diversity and Equity
- Innovation and Risk Taking
- Bold Thinking and Action

These areas of focus enable us to challenge ourselves and ignite entrepreneurial thought and action in our institutions and students, providing boundless possibilities for members, sponsors, partners, and local communities.

The faces of entrepreneurship create a rich and diverse tapestry. As a voice for community colleges and students, we embrace all of the faces of entrepreneurship and are inspired by the results we see each day.

We look forward to welcoming new faces of entrepreneurship in the future!

Sincerely,



Rebecca A. Corbin, Ed.D.  
President & CEO of NACCE



# The Faces of Entrepreneurship

A photograph of two men in a laboratory setting. The man on the left, wearing glasses and a black shirt, is leaning over the man on the right. The man on the right, with a beard and wearing a dark green shirt, is holding a black keyboard and looking at a device on a table. The device has blue lights. In the background, there is a red cylindrical object and some mechanical parts.





## Mission, Philosophy, Vision

Our mission is to engage members through entrepreneurial thinking and innovative action.

This engagement takes place in classrooms, on campuses, and in communities throughout the United States.

## Who We Are

Every college and individual has an extraordinary capacity to innovate through entrepreneurial thinking and action. This is NACCE's guiding principle as the country's leading advocate for entrepreneurship education and programming in community colleges. From our leadership team of academic trailblazers, to our individual members who break new ground each day, we lead the way for community and technical colleges to infuse innovation and entrepreneurship into their academic programs and initiatives. Membership is at the heart of what we do.

## Shining A Light

Bold ideas and action, nurtured and celebrated, are the lifeblood of innovation. They fuel creative thinking, risk-taking, and problem-solving. As the world continues to change, we help community colleges shine a light on the benefits of entrepreneurial thinking. Innovative thinking helps students obtain the skills they need to thrive in the endeavors they undertake and meet the challenges of the future. We are committed to bringing value to our members and partners by creating entrepreneurial pathways for all.

## Why Join Us?

When individuals embrace entrepreneurial thinking, they can tackle any challenge and overcome obstacles creatively and poignantly. This is what is truly remarkable about entrepreneurial mindset. Entrepreneurial opportunities exist in all communities, academic disciplines, departments, and students. At NACCE, we strive to shine a light on these opportunities.



# Pathways For All

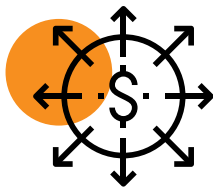


# The Strategic Vision

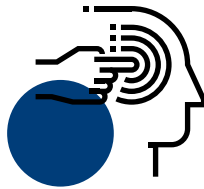




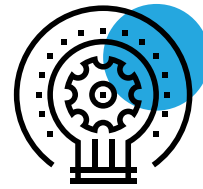
NACCE's Strategic Plan 2023-2026 is the underpinning of our bold vision for the future and includes these initiatives:



Continue to serve as a vital bridge and funding mechanism for community colleges.



Inspire community college leaders to think creatively, take risks, and encourage entrepreneurial thinking to solve challenges.



Build enthusiasm, connectivity, and dynamic cultures in colleges and communities through entrepreneurial endeavors.

## → Strategic Initiatives

**Entrepreneurial College of the Future** – a bold new framework for entrepreneurship, providing a database of best practices and subject-matter expertise. ECOF also provides access to Everyday Entrepreneur (EE) seed funding, support for veterans entrepreneurship programs, and will increase the number of engaged professionals from 3,000 in 2023 to 10,000 in 2026.

**Entrepreneurial Resource Development** – a new forum inviting college advancement professionals and foundation leaders into the NACCE community to apply entrepreneurial mindset to raise more funds.

**Presidents for Entrepreneurship Pledge and Ecosystem Action Pledge** – as part of the 2023 National Entrepreneurship Week observance, NACCE invited community stakeholders to co-sign a pledge of support for college presidents to accelerate innovation in communities.

**Expanded NACCE Fellows Program** – through a successful pilot program with Morgan State University doctoral students, NACCE's research arm conducts studies on the impact of entrepreneurship grants on organizations.

**Centers of Engagement** – these focus on co-creating and scaling best practices by engaging NACCE member districts in entrepreneurship focused on the arts and veterans, respectively. This supports our goal of increasing the number of engaged colleges and professions in NACCE's network from 4,500 to 5,000 and distributing tools and best practices to 500+ colleges.

# Why Become a NACCE Partner?

**The benefits of working with NACCE are noteworthy.** Revenue raised from partners fuels the growth of community colleges and local communities. NACCE partners join a wide network of subject-matter experts on a range of business and innovation topics. They also gain access to an interactive database of entrepreneurial best practices across the nation. And, they get to work with some of the most dynamic thinkers and leaders in entrepreneurship today. In addition:

- NACCE partners achieve **social responsibility** and **philanthropic goals** efficiently and in tangible, demonstrable ways that positively impact individuals and communities.
- Supporters can participate in a vital network of more than **1,100 community colleges** in **50 states** and Canada, reaching **7 million community college students** and **10,000 entrepreneurship educators**.
- Partnering provides the opportunity to help **improve economic prosperity** in **local communities**.

## Learn More

Representing a dynamic community of technical and community colleges and universities, including faculty, staff, administrators, and college foundations, NACCE boldly embraces a vision of equity and prosperity for all by providing unique opportunities and attracting new audiences to entrepreneurship.



**Contact NACCE about  
membership, partnership,  
or sponsorship opportunities:**  
email [membership@nacce.com](mailto:membership@nacce.com)  
or visit us at [nacce.com](http://nacce.com).





NATIONAL ASSOCIATION  
FOR COMMUNITY COLLEGE  
**ENTREPRENEURSHIP**

**nacce.com**

3434 Kildaire Farm Road · Cary, NC 27518  
(413) 306-3131 (Membership)  
(984) 206-1329 (Events & General Information)

NACCE is a 501(c)(3), tax-exempt organization

Follow @NACCE



**#WEARENACCE**

